

# EXAMUNION

Certified IT Exam Material Authority



Accurate study guides, High passing rate!  
We offer free update service for one year!

<http://www.examunion.com>

**Exam** : **TB0-118**

**Title** : Architecting Composite  
Applications and Services  
with TIBCO

**Version** : Demo

1. Within TIBCO ActiveMatrix Administrator, which three can have logging enabled? (Choose three.)

- A. ActiveMatrix host
- B. ActiveMatrix environment
- C. ActiveMatrix node
- D. ActiveMatrix composite application
- E. ActiveMatrix enterprise

**Answer:** A,C,D

2. A company wants to automate its interactions with its partners.

Which product is best suited for this purpose?

- A. TIBCO Business Studio
- B. TIBCO ActiveMatrix Service Grid
- C. TIBCO ActiveMatrix BusinessWorks
- D. TIBCO BusinessConnect
- E. TIBCO ActiveMatrix BPM

**Answer:** D

3. Which two transaction policies are supported by TIBCO ActiveMatrix Service Bus? (Choose two.)

- A. JDBC transaction
- B. managed transaction
- C. XA transaction
- D. single resource transaction
- E. transacted one-way

**Answer:** C,D

4. What are two properties of a push-based cached composite service? (Choose two.)

- A. Responses require the invocation of all underlying services.
- B. Underlying services are not required.
- C. Underlying services are not impacted when the composite responds to requests.
- D. Responses are provided from information private to the service.

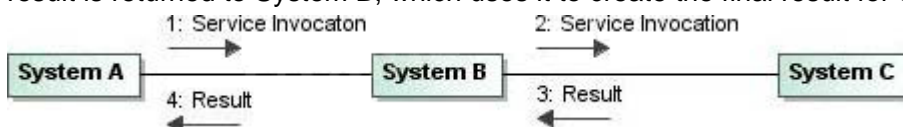
**Answer:** C,D

5. Which measurement determines if the Recovery Time Objective is being achieved?

- A. Mean Time Between Failures
- B. Mean Time to Repair
- C. Maximum Time to Repair
- D. Number of Failures/Time

**Answer:** B

6. System A invokes a service on System B, which in turn invokes a service on System C. System C's result is returned to System B, which uses it to create the final result for System A.



Which statement about the coordination patterns is correct?

- A. Multi-party request-reply is most appropriate when System C's operation takes a long time.
- B. Multi-party delegation is most appropriate when the result of System C's operation must be reliably returned.
- C. Multi-party delegation with confirmation is most appropriate when System C's operation takes a long time.
- D. Multi-party fire-and-forget is most appropriate when the result of System C's operation must be reliably returned.

**Answer: C**

7.Which two statements are true about the Total Architecture approach to system, data, and business process integration? (Choose two.)

- A. Total Architecture provides business benefit by Web Service enabling relevant interfaces and business processes in the enterprise.
- B. Today's business solutions combine data, events, processes and people, which Total Architecture must consider when designing a suitable solution.
- C. Total Architecture ensures that the solution is suitable for its intended purpose but adaptable to changes in the business process it supports.
- D. Total Architecture provides a generic framework that is suitable for implementing the range of common business processes.

**Answer: B,C**

8.Which three statements are true? (Choose three.)

- A. An ActiveMatrix host can manage multiple ActiveMatrix nodes.
- B. An ActiveMatrix host can manage multiple ActiveMatrix environments.
- C. An ActiveMatrix environment can contain multiple ActiveMatrix nodes.
- D. An ActiveMatrix node can contain multiple ActiveMatrix Administrators.
- E. A TIBCO Enterprise Message Service server can support multiple ActiveMatrix environments.

**Answer: A,C,E**

9.A solution needs to update a backend database with a JDBC interface.

Which TIBCO ActiveMatrix component should you recommend?

- A. ActiveMatrix Mediation implementation type
- B. ActiveMatrix Spring implementation type
- C. ActiveMatrix BusinessWorks
- D. ActiveMatrix WebApp implementation type

**Answer: C**

10.A service has an inbound SOAP/HTTP binding. There is no external load balancer available. The invocation overhead under extremely high load volumes causes requests to queue for dispatch.

What is the recommended way to improve request dispatch concurrency?

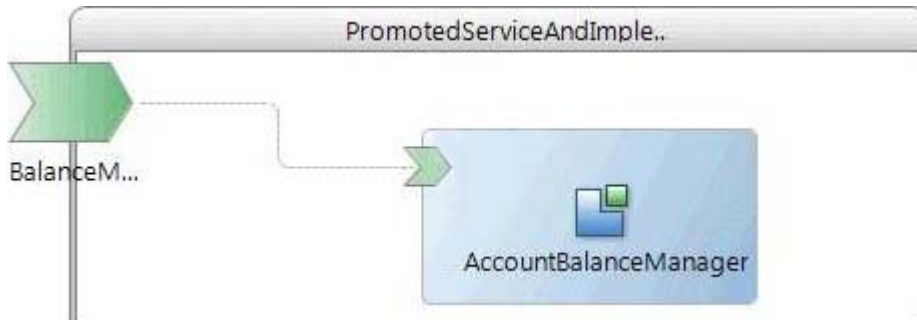
- A. deploy additional service instances to handle the request load
- B. use policies to specify the thread pool management
- C. implement a flow-control policy set to limit the rate of incoming requests

D. change from a SOAP binding to a virtualization binding

**Answer: B**

11. Consider the following design of a BalanceManager service and its corresponding implementation in the AccountBalanceManager:

Which statement is true about the deployment of the AccountBalanceManager component?



- A. It is illegal to deploy more than one instance of the AccountBalanceManager.
- B. If two instances of the AccountBalanceManager are deployed on different nodes than the BalanceManager Service, each service request will be handled by one of the instances.
- C. If two instances of the AccountBalanceManager are deployed on different nodes than the Balance Manager Service, each service request will be handled by both of the instances.
- D. If one instance of the AccountBalanceManager is deployed on the same node as the BalanceManager Service and another AccountBalanceManager is deployed on a different node, the instance on the different node can never receive the requests.

**Answer: B**

12. Which statement best characterizes the IT architecture for a solution?

- A. It defines the set of products, technologies, programming tools, and coding standards to be used to implement a solution.
- B. It is a compilation of user features required for the solution.
- C. It defines the structure of a solution (communication mechanisms, components) suitable for the present purpose.
- D. It provides a generic framework, such as an application server, that is suitable for solving any common business problem.

**Answer: B**

13. Which two should be considered when deciding the number of versions to maintain of a particular service? (Choose two.)

- A. the frequency with which incompatible service provider interface changes are deployed
- B. the number and hierarchy of organizations having consuming applications
- C. the frequency with which compatible service provider interface changes are deployed
- D. the frequency with which service consumers typically deploy changes

**Answer: A,D**

14. When wrapping a backend system, what does a Web Service always provide that the native system interface does not?

- A. standardized service operation semantics
- B. an HTTP-based interface
- C. a common data model
- D. access independent of implementation technology

**Answer: D**

15. Which three are required in order to determine the feasibility of providing a proposed service? (Choose three.)

- A. service architecture
- B. binding port specification
- C. service interface specification
- D. user interface specification
- E. service utilization scenarios

**Answer: A,C,E**